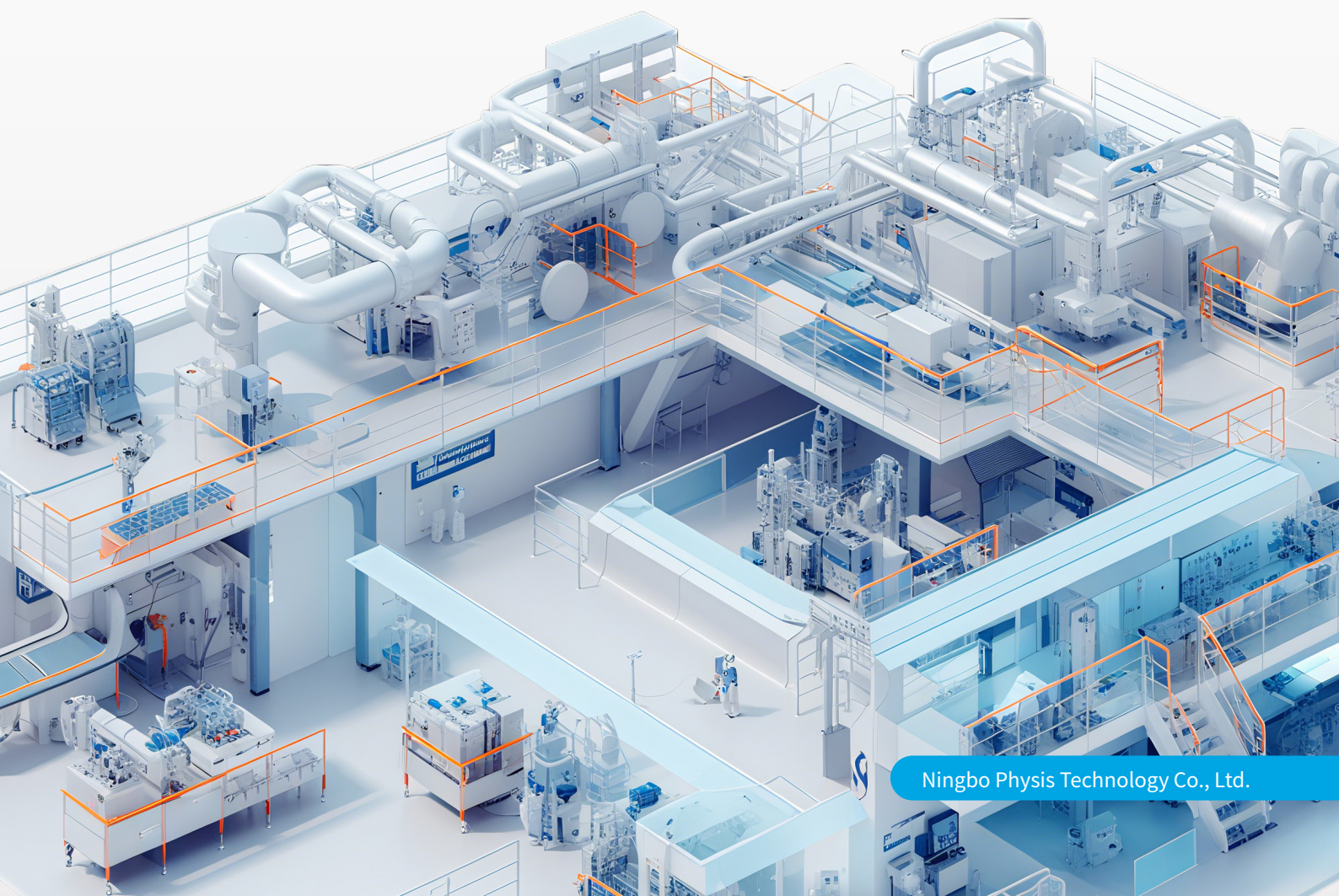


MOTION CONTROL PRODUCTS

For numerous industrial automation applications



Ultract III Series Servo Motor

Compact Design | High Efficiency | Low Noise | Reduced Inertia | Customizable Solutions

Power : 0.2~310KW

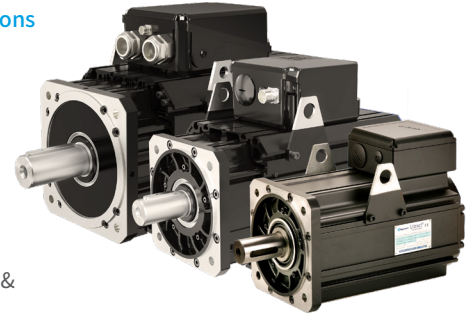
Peak torque : 2~3500Nm

Speed : 0~6000rpm

Cooling: natural cooling, fan cooling, liquid cooling

Sensor: Sincos, Absolute, Encoder, Resolver, Digital incremental

Applications: Photovoltaic (PV), Medical, Wind Power, Robotics, Packaging, Rubber & Plastics, Machine Tools, Textile, etc.



Express Series Servo Motor



High Dynamic Response, Robust Overload Capacity, Compact

Power : 7.9~337.2KW

Peak torque : 150~3545Nm

Speed : 0~3500rpm

Cooling: fan cooling, liquid cooling

Sensor: Sincos, Absolute, Resolver

Applications: Rubber & Plastics, Lithium Batteries, Metal and Powder Forming, Profile Extrusion, etc.

TK Series DD Servo Motor

High-speed Operation, Precision Performance, Simplified Design, Customizable Solutions

Torque range : 3~400000Nm

Speed range : 0~30000rpm

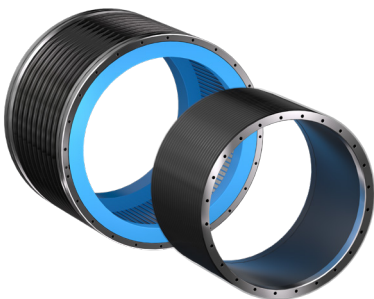
Diameter range : 85~3500mm

Cooling: natural cooling, fan cooling, liquid cooling

Applications: Machine Tools, Robotics, Plastics & Rubber, Oil Drilling, Aerospace, Fluid, etc.



XT Series DD Servo Motor



High Power Density, Space-saving Design, High Torque at Low Speed, Reliable & Durable

Torque range : 0~50000Nm

Speed range : 0~600rpm

Diameter range : 210~1220mm

Cooling: natural cooling, liquid cooling

Applications: Five-axis machines, direct-drive rotary tables, and swivel heads are tailored for compact spaces and high-torque applications.

AxN Series New Digital Servo Drive

Built-in PLC, High-Speed Current Loop, Dual-Loop Position/Speed Control, Advanced Field-Weakening Control

Rated Power: 4.5~100KW

Input voltage: 0~500Vac (3-Phase)

Encoder Support: Endat, Hiperface, Sincos, Hall, Resolver, Nikon, Tamagawa etc.

Cooling: fan cooling, liquid cooling

Bus Interface: Modbus, CANopen, EtherCAT

Installation method: cabinet, wall-through, baseplate

Applications: CNC Machine Tools, Medical, Plastics & Rubber, Powder Molding, Profile Extrusion, Packaging, Printing, Textile, Robotics, Photovoltaic (PV), etc.



AxN-DC series Common DC Bus Drive

Built-in PLC, EtherPMC Bus, High-Precision Control loop, Energy saving, Space efficient

Rectifier Unit: 0~500Vac, Rated power 80kW, support parallel connection of rectifier modules

Inverter Unit: 0~800Vdc, Rated power 11~200KW

Bus Interface: EtherCAT, EtherPMC

Cooling: Fan cooling, liquid cooling

Encoder Support: Endat, Hiperface, Sincos, Hall, Resolver, Nikon, Tamagawa

Installation Method: cabinet installation, wall-through installation, baseplate installation

Applications: Machine Tools, Robotics, Packaging, Printing, All-Electric Injection Molding, Photovoltaics, and Other Multi-axis Solutions



PH600 Series Servo Drive

High Configuration, High Performance, High Reliability Easy to operation

Rated Power: 7.5~355KW

Frequency: 0~400Hz

Carrier Frequency: 3~8KHz

Bus Interface: Modbus RTU, CANopen, EtherCAT, Profinet

Cooling: Fan cooling

Applications: Injection Molding Machine, Hydraulic press machine, Bending machine, Die-casting machine



AxN-PD Series Multi-axis Servo Drive

Built-in PLC, EtherPMC Bus, High-Precision Control loop, High-performance Computing

Rectifier Unit: 380~440Vac Rated Power 45kw~355kw, support parallel connection of rectifier modules

Inverter Unit: 0~800Vdc Rated Power 1.5~75kW

Bus Interface: EtherCAT, CANopen, EtherPMC

Main encoder: Endat, Biss, Hiperface, SinCos, Resolver, Hall, Nikon, Tamagawa

Aux encoder: Incremental encoder, Biss, AB simulation encoder (full-closed loop control)

Cooling: Fan cooling

Applications: CNC Machine Tool, Multi-wire Cutting Machine, Injection Molding Machine



Servo Drive Brushless IML Motor



IML drive with integrated electronics offers maximum control and power in a compact space.

Cost Efficiency: Reduces cabinet space requirements up to 80%, Cuts cabling costs over 70%

Flange Sizes: 60, 80, 115, 130mm

Power Range: 0.4~2KW

Protection: IP65

Communication: EtherCAT, COE – EOE supported

Applications: Glass, Stone & Wood, Packaging, Food & Beverage, Dosing & Weighing, Printing & Paper Converting, Metal Sheet, Robotics, Aerospace

OPENcontrol CNC

The numerical controls “OPENcontrol” family provides flexibility and high performance for various applications and material processing.

Fieldbus: EtherCAT, CANopen, Mechatrolink II & III

High scalability: Hardware configuration and calculation ability

Cross and volumetric compensation

Advanced Software function

Multi-axis electronic CAM

Powerful integrated PLC

Applications: Wood & composites, Glass & stone, Metal, Additive & Special application, Laser cutting, etc.

OPENprime Demanding applications

Up to 64 interp. axes
Up to 64 total axes
Up to 24 processes
Min tick 500 microSec.

OPENkey Advanced applications

Up to 16 interp. axes
Up to 24 total axes
Up to 4 processes
Min tick 1 mSec.

OPENsmart High runner

Up to 8 Interp. axes
Up to 16 total axes
Up to 2 processes
Min tick 2 mSec.

OPENone High class entry level

Up to 4 Interp. axes
Up to 8 total axes
Up to 2 processes
Min tick 2 mSec.
ARM platform with O.S. Linux

Panel CNC 10,1"



WeChat



www.physis.com.cn



+0086- (0) 574-23459197



sales@physis.com.cn



No.308 Xiaogang Anju Road, Beilun Distirct, Ningbo China

PHSB2508-V03